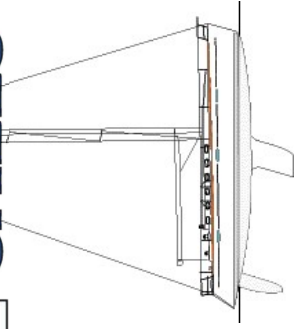



MURRAY
YACHT
SALES

PRINCIPAL SPECIFICATIONS

- Design: Bruce Farr & Associates.
- Length overall: 14.90m.
- Hull length: 14.50 m.
- Waterline length: 12.60m.
- Hull beam: 4.50m.
- Light displacement CE Standard: 12,045 kg approx.
- Shallow draught standard - lead: 2.30m – 3976 kg.
- Deep draught option - lead: 2.80m – 3916 kg.
- Air draught: 21.05m.
- Fuel capacity: 235L.
- Fresh water capacity: 620L.
- Maximum engine power: 100HP.
- Gross tonnage: 26.53 Tons.
- Certification CE: A12 B12 C14 D15.

SAIL AREA

- Total sail area: 136m².
- Mainsail: 64m².
- Genoa 150%: 72m².
- Spinnaker: 159m².

SAIL PLAN

- I: 18.19m.
- J: 5.20m.
- P: 17.50m.
- E: 6.45m.
- LP (Overlap 150%): 7.80m.
- SL: 17.97m.
- SMW: 9.36m.

of the inner moulding makes cleaning easier and provides a better finish.

The hull gel coat is steel blue.

- DECK -

The deck is a sandwich (glass fibre, balsa, polyester resin) construction for an improved strength/weight ratio and optimal insulation.

All working and circulation areas of the deck are treated with 'Picot' non-slip coating.

An inner moulding is bonded to the deck interior to improve its finish.

The deck is teak.

- HULL/DECK JOINT -

The hull/deck joint is formed by an unvarnished teak toerail, bonded and screwed in position. This assembly technique ensures water-tightness of the hull/deck joint and provides safety during movement on deck.

- KEEL -

Keels (shallow and deep draught) are of lead. To improve their durability the keels are given an anti-corrosion treatment and improved finish in the factory before assembly using epoxy based coatings and paint. The keels are fixed to the hull with a system of stainless steel screws and backing plates.

- STEERING SYSTEM -

- Under-hung rudder with glass fibre and vinyl ester composite stock.
- Rudder turns on self-aligning swivel bearings for more sensitivity and precision on the helm.
- **Stainless steel steering wheel (1700 mm diameter)**, on console, double-spoked, leather trimmed.
- Cable transmission system.
- **Three-bladed Max Prop propeller** for less drag under sail and excellent output when motoring.
- **Retractable bow thruster** with 2 batteries.

TECHNICAL SCHEDULE

Designed in accordance with European RCD requirements and CE certification, these regulations ensure that the First 47.7 Commodore incorporates the minimum safety requirements including:

- Safety and protection of persons on board.
- Durability of materials.
- Stability and safety.
- Safety when manoeuvring.
- Fire protection.
- Protection of the environment and reduction of engine emissions.

- HULL -

The single-skinned hull is GRP and glass fibre construction with balsa stringers.

- A structural inner moulding is bonded to the hull. Its structural role is important as it takes and absorbs the stresses at pressure points (chain plate tie rods, keel, rudder, etc.) and spreads any loads, guaranteeing reduced strain on the hull. The surface



ON DECK

- **MOORING AND ANCHORING** -
- Stainless steel bow fitting.
- Tack fitting and removable bow roller.
- 8 aluminium mooring cleats with stainless steel protection.
- Self-draining anchor well with hatch cover.
- 12 V- 25 amp - 1200 W horizontally mounted electric windlass with up down controls, remote control and manual emergency control.

- SAFETY ON DECK -

- Forward opening stainless steel pulpit with teak step.
- Bicolour navigation lights fitted to pulpit.
- Two part stainless steel pushpit with lifebuoy holder, ensign staff support and closing guardrail.
- The boat has a double row of adjustable stainless steel guardrails all round.
- 10 single and 4 double stainless steel shaped stanchions (with small side openings) with flush moulded stainless steel bases (Bénéteau patent).
- All round deck teak toe rails.
- Two stainless steel handrails bolted to coachroof.

- COCKPIT -

- Six cockpit lockers:
 - 3 aft lockers – of which the one under helmsman's seat is for liferaft stowage.
 - 2 central cockpit lockers (1 port, 1 starboard) with engine stowage support.
 - 1 gas locker to port.
- Teak-slatted cockpit benches and sole.
- "Captain Blue" cockpit cushions.
- Teak grating in front of wheel
- Steering wheel console.
- Triangular in shape and functional:
 - Space for steering compass.
 - Footrest for helmsman when seated to windward

- Self-draining cockpit.
- 2 waterproof cockpit speakers.

- BATHING PLATFORM AND AFT DECK -

- Aft deck with built-in teak-slatted step and teak-slatted folding bathing platform.
- Removable stainless steel bathing ladder with teak treads.
- Hot and cold cockpit shower.
- Shore supply.
- Steel blue transom.

- MAST AND BOOM -

- The anodised aluminium **mast** is tapered and keel-stepped.
- Triple 17° aft swept spreaders.
- Partners with 10 swivel blocks.
- Spinnaker pole track fitted to mast.
- Anodised aluminium **boom**.
- Two reefing lines and mainsail foot outhaul led back to cockpit.
- Rigid boom vang.

- STANDING RIGGING -

- comprises :
- **ROD rigging.**
 - Forestay with genoa furling gear with removable drum.
 - Hydraulic backstay.
 - Stainless steel chainplates and inner shrouds fastened to sidedeck.

- RUNNING RIGGING -

All lines are led back to the cockpit.

- 2 jib sheet travellers.
- 1 Low Stretch jib halyard.
- 2 jib sheets.
- 2 mainsheet travellers.

- 1 mainsheet.
- 1 Low Stretch main halyard.
- 1 boom topping lift.
- 1:8 block and tackle kicking strap for boom vang adjustment.

- MAINSAIL SYSTEM -

This comprises:

- Lewmar Racing aluminium mainsheet track with ball bearing car in cockpit.
- Mainsheet fine-tune adjustment.

- SPINNAKER EQUIPMENT -

- Spinnaker pole downhaul.
- Spinnaker pole uphaul.
- 2 spinnaker sheets.
- 2 spinnaker halyards.
- 2 spinnaker guys.
- 2 spinnaker sheet barbers.
- Spinnaker pole traveller.
- Carbon fibre spinnaker pole.
- Jamming cleats.

- GENOA SYSTEM -

- 2 x 1 Racing genoa tracks with ball bearing cars adjustable under load, with single jammers and genoa sheet control tackle.
- FACNOR genoa furling gear with removable drum and two single foot blocks.
- Return blocks and jammers.

- WINCHES -

Harken aluminium winches:

- 2 x H 64.2 STA genoa sheet winches.
- 1 x H 46.2 STAE 1 electric winch.
- 1 x H 46.2 STA winch.
- 2 x H 48.2 STA spinnaker sheet winches.
- 3 winch handles.





- PORTS, HATCHES AND COVERS -

As with all Bénéteau yachts, the First 47.7 has a minimum of 2 sources of natural light in each space, of which at least one is opening for maximum light and ventilation (see Accommodation).

- 100 HP engine with drive shaft transmission.
- Max Prop 3-blade propeller.
- Engine compartment insulated and soundproofed with honeycomb foam.
- Rotomoulded 235L (approx) capacity fuel tank with sediment filter and flow cut-off.
- Engine hatch in cockpit to port.
- "Flush" aluminium engine control lever.
- Retractable bow thruster with 2 batteries.

- ELECTRICITY -

- 1x 110 Amp 12V engine battery with circuit breaker.
- 2 x 140 Amp 12V service batteries.
- Battery management by 12V voltmeter and ammeter.
- 40 Amp 12V battery chargers.
- Electrical distributor.
- 12V 16-switch and 4-switch 110/220V electrical control panel.
- Circuit protection via differential circuit breaker.
- 2 x 220V sockets.
- Lighting (see Accommodation).

Navigation lights:

- Bicolour bow light.
- Stern light.
- Anchor light.

- WATER SYSTEM -

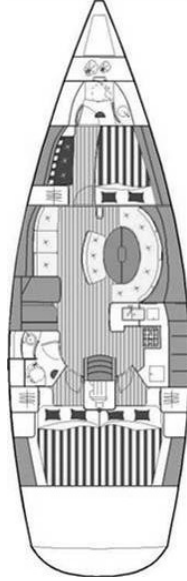
- Water maker with expansion tank and filter.
- Approx. 700L capacity distributed between 3 rigid water tanks with electric gauges.
- Electric 42L capacity calorifier (dual: engine heat exchanger and 220V supply).

- 2 bilge pumps (1 manual | electric) in a sump above the keel.

ACCOMMODATION

The First 47.7 Commodore is available in 3 layout versions, with 3 or 4 cabins. Woodwork is in pear-coloured Mukali. Soles are 'hydro pont' in varnished wood with black strips.

3-cabin, L-shaped galley version - D9



- SAIL LOCKER -

Sail locker accessed from the deck through a 512mm x 512mm opening hatch. Halogen deckhead lights.

- FORWARD HEAD COMPARTMENT -

- Max. headroom: 2.04m.
- Head compartment comprises:
 - Marine toilet with lid.
 - Shower tray and washbasin unit built in to hull inner moulding.
 - Round stainless steel washbasin with mixer tap and hot and cold pressurised water. Shower with flexible hose, bracket and mixer tap.
 - 2 low lockers with wood doors.

- 4 stowage shelves.
- 6 mirrors.
- 1 semi-circular opening hatch.
- 4 halogen deckhead lights.

- FORECABIN -

Owner's cabin with berth offset to starboard.

- Max. headroom: 2.02m.
- Starboard berth 2.03m x 1.60m (max. dimensions).
- Numerous stowage places:
 - 4 shelves along hull sides to starboard.
 - 2 drawers and stowage under berth.
 - Hanging locker to port with shelves.
 - 1 stowage space with shelf to port.
 - 3 shelves to port.

- 1 settee to port.
- 4 halogen deckhead spotlights and 2 halogen reading lights.
- 220V socket.
- Natural light and ventilation by means of:
 - Two 512mm x 512mm opening hatches with blinds.
 - Two fixed hull ports.

- SALOON -

- Max. headroom: 2.06 m.
- Saloon table and settee are offset to starboard, allowing good circulation around the boat.
- Upholstered saloon settee with 4 cushions.
- Central oval settee with cushions, backrests and built-in stainless steel handrail.
- Hinged saloon table with aluminium feet.
- Bulkhead-mounted 17" flat screen television (no aerial), and DVD/CD player.
- Saloon to port: 1 settee.
- Numerous stowage places:
 - 4 shelves along hull to starboard.
 - 3 shelves to port.
 - Lockers
 - Bar unit.



- Stainless steel handrail.
- Plenty of light coming by means of:
 - 4 opening ports 200mm x 480mm.
 - 2 fixed hull ports.
 - 1 opening hatch.
 - Good ventilation provided by 2 dorades.
 - Varnished sole.
 - 6 halogen deckhead lights.
 - 2 fluorescent deckhead lights.
 - 1 lamp with shade.
- **L-SHAPED GALLEY TO STARBOARD** -
 - Max. headroom: 2.10m.
 - Lavishly equipped galley comprising:
 - L-shaped work surface with moulded wood handrail.
 - 180L front opening refrigerating unit with shelves.
 - Microwave oven.
 - Gimballed 2-burner hob with oven, protective rail and covered by folding work surface.
 - Rectangular double stainless steel sink with chopping boards.

- Unit under chart table with 2 shelves and drawers.
- Oddments locker.
- Book shelves.
- Flag locker.

- AFT HEAD COMPARTMENT -

- Max. headroom: 2.04 m.
- Head containing:
 - Marine toilet.
 - Shower tray and washbasin unit built in to hull inner moulding.
 - Washbasin with mixer tap and hot and cold pressurised water.
 - Shower with flexible hose and bracket.
 - 2 lockers with wood doors, large mirror, bathroom accessories.
- 1 opening hatch.
- 2 ports.
- 3 halogen deckhead lights.

- COMPANIONWAY -

- Wood companionway with aluminium and moulded wood treads. It is removable for easy engine access.
- 2 stainless steel handrails.

- TWO AFT CABINS -

The 2 aft cabins are symmetrical and fitted in identical fashion:

- Max. headroom: 2.02m.
- 2 x 1 double berths 2.00m x 1.50m with mattresses.
- 2 x 2 access hatches to engine compartment.
- Numerous stowage places:
 - 2 x 1 storage unit (4 separate compartments with drawers and shelves).
 - 1 hanging locker and small seat (with stowage locker).
 - Stowage under berth.
 - 1 shelf and small locker close to engine compartment.
- Plenty of light by means of:

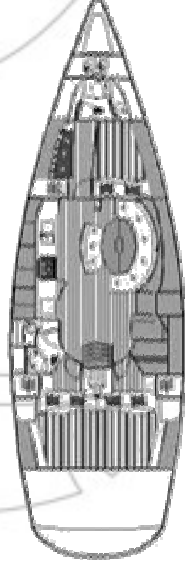
- CHART TABLE TO PORT -

- This comprises:
- Forward facing drop-lid chart table.
 - Panel for navigation instruments and electrical panel.
 - Radio/CD player (speakers in saloon and cockpit).
 - 220V socket.
 - 1 port.
 - Numerous stowage places:

- 2 x 2 Lewmar 200 x 421mm opening ports
- 2 x 1 fixed hull port.
- 2 x 2 halogen reading lights.
- 2 x 1 halogen deckhead lights.

3-cabin, fore and aft galley version - IF5

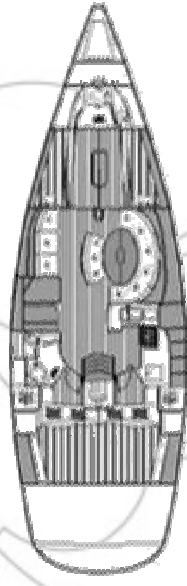
Fore and aft cabins are identical to those in the previous version, as are the heads.



The linear galley is to port and the forward facing chart table is to starboard.

4-cabin, L-shaped galley version - DQ

Accommodation is identical to that of the D9, 3-cabin version, apart from the forecabin.



- TWO FORECABINS -

- 2 x 2 berths, one above the other, 2.0m x 0.7m.
- 2 x 1 locker on ceiling



YACHT

MURRAY

SALES

OPTIONS

- Tuff Luff forestay (in place of genoa furling gear).
- Wide sprayhood in 'Captain Blue' with two frames.
- Supplementary 180L water tank.
- Rigid toilet holding tanks fore and aft.
- Eberspächer heating.
- Laminated soles.

ELECTRONICS NAV PACK (Option) Raymarine N° 11

- **Cockpit to port:** ST60 Tridata instrument, log and depth sounder (with log and sounder transducers), ST60 Wind instrument (with anemometer, masthead windvane, 30 metres cabling and junction box at foot of mast).
- **Cockpit to starboard:** ST6001 Plus Autopilot with controller, computer, compass and LS40 helm drive.
- **On steering console:** ST60 remote control for mast-foot repeaters.
- **On mast:** 3 x ST60 multifunction repeaters.
- **Over chart table:** Plotter, C80 LCD 8,4" colour screen with Navionics Gold cartography. Linked to GPS receiver to aft of cockpit.

Additional electronic navigation equipment not included in pack (Option):

- Raymarine PC Interface (RS32 input/output series in PC format).
- Radar with mast fitting.

